

# Downley Common Newsletter

Quarterly Newsletter of the Downley Common Preservation Society Issue 18. Jan 2002

Web: <http://www.downleycommon.org.uk>. Email [bill.thompson@downleycommon.org.uk](mailto:bill.thompson@downleycommon.org.uk)

## Subscriptions

Could I remind you that annual subscriptions are now due. Please send to Kristina Frydberg at 4 Moor Lane, Downley.

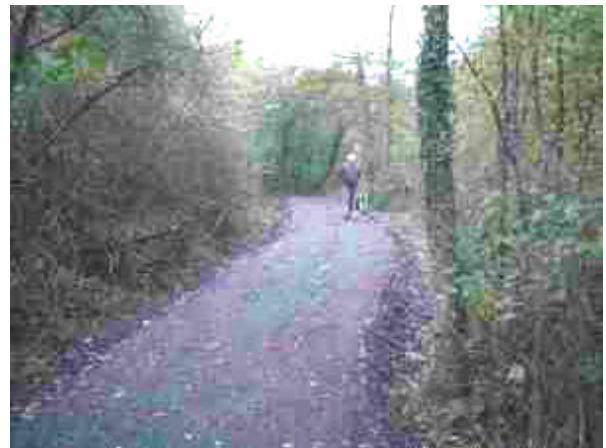
## Bridleway at North End

Much excitement was generated when it was discovered that Bucks County Council appeared to be intent on driving a road through the north end of the Common. It transpired that the works being undertaken were a refurbishment of the bridleway due to the boggy state that had developed making it extremely difficult to walk along. Complaints had been made to the Council and they therefore decided to make some improvements. The first DCPS were aware of it was when a walk round revealed the sights shown below - so much for consultation!

The first thing that causes concern is the deposit of bitumen-based road planings laid adjacent to Mannings - we've not seen any Starfruit there this year despite the best efforts

of Plantlife, but dumping road planings next to it is not likely to improve matters!

Walking onwards we find what appears to be a beautifully rolled tarmac surface, although on closer inspection the surface is only rolled and compressed planings and is still quite loose.



However, the height is quite startling, 18" in places - not so much a bridlepath, more a causeway towering above the boggy marshes of Downley Common

At the far end, there seems to be a large expanse of car park - one expects that the white-lining crew will be next to appear complete with road signs and curbs. Joking

	Diary	
17 Jan 2002, 7.00pm	Commons Network Meeting – Come and have your say	Princes Risborough Community Hall
3 Feb 2001, 10.00am	Working Party. Coppice planting	Dairy
3 Mar 2001, 10.00am	Working Party. Install posts alongside track to the LeDe	Bus turning circle
4 April 2002, 8.00pm	Members Meeting	Village Hall
7 April 2002, 10.00am	Working Party. TBD	Bus turning circle

apart, this is an open invitation to off-road vehicles to venture onto the Common. Since this was taken, signs of extra tire tracks have appeared.

A deputation from DCPS has met with Ian Burgess the Rights of Way officer who has promised to attend to most of our concerns as follows:

- Any planings adjacent to the pond to be removed and replaced with "hoggings" - a non-bituminous based material
- A ditch to be dug on the side furthest from the pond to persuade water to drain away from the pond.
- The excessively elevated sections already constructed, to be landscaped as far as is possible
- Further sections of bridleway to be at a height much closer to ground level
- The excessive area of planings at the junction with Cookshall Lane to be removed to prevent its possible use as a car park
- Bollards to be installed at the junction end to prevent vehicle access.

We will report on further developments as they occur.

## Bonfire 2001



A very successful Bonfire was held this year in near perfect conditions – a cold clear and dry night, attended by by well over a thousand visitors. We sold out of torches and would like to thank all those who assisted, including the people at Hugheneden Manor who constructed most of the bonfire, those

provided hands to build it, the torch-makers and sellers and the Downley Guides who put on the barbeque.

The picture above shows the children from Miss Virginia's Montessori School who provided the guy. The Moor Lane playgroup turned up to watch as well – it's turning into quite a little event on its own!

## Commons Day at Cadmore End – Nov 17.

This was an event of the Chiltern Commons Network held at Cadmore End Village Hall and consisted of a morning of talks on the Archeology of Chiltern Commons followed by a walk around Cadmore End Common highlighting archeological features, particularly the old brick kilns to be found there.

The group started off from Cadmore End Village Hall after having dined on pizza and sandwiches courtesy of Cadmore End Women's Institute.

Remains inspected included the ruined brick kilns now completely overgrown and the later brick kiln gradually succumbing to ivy invasion.



For more information about the Chiltern Commons Network contact Simon Fisher at Chilterns AONB on 01844 271302

## Happy New Year

Here's wishing all our members a very happy new year. Don't forget that the next member's

meeting will now be held on 4 April 2002 at  
8.00pm in the Village Hall.